









CARA30

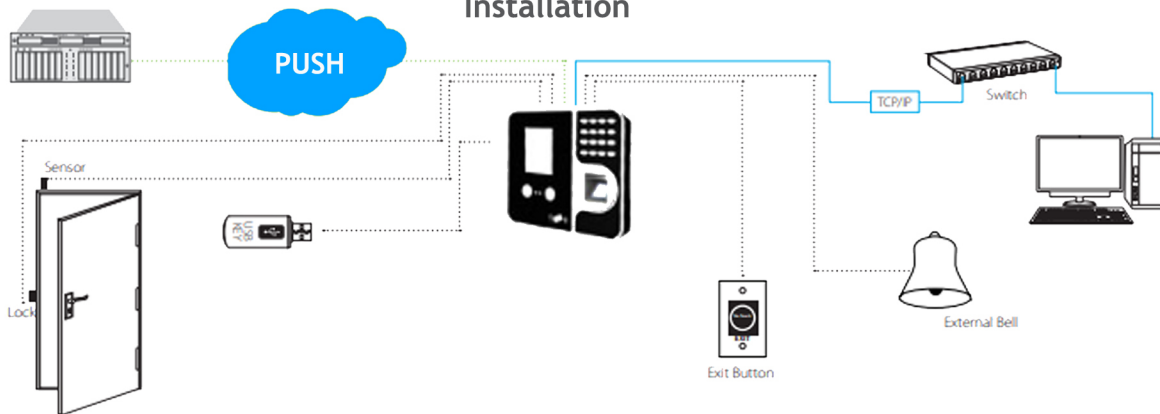
FACE ATTENDANCE TERMINAL

- 
FACE
1000
- 
THUMB
5000
- 
RFID
5000
- 
PASSWORD
5000
- 
BATTERY
YES
- 
TRANSACTION
300,000

Specifications

- | | | |
|--|---|---|
| <p>Display
2.8 inch TFT (320*240)</p> <p>Verification Speed
≤1 sec (Fastest)</p> <p>Capacity
Max User : 5,000
Face Templates : 1,000
Fingerprint : 5,000
Card : 5,000
Password : 5,000
Photo : 10,000 (Enroll Photo + Attendance Photo)
Transaction : 300,000</p> | <p>Communications
TCP/IP/USB (host & client), Wi-Fi(Optional)</p> <p>Power
DC 12V/1A</p> <p>Power Management
Sleep Mode, Screen Saver, Timing Shutdown</p> <p>Environment
Operating Temp: 0° ~ +45°, Humidity:20%-80%</p> | <p>Algorithm
Face Algorithm : Cara30</p> <p>Fingerprint Sensor
Optical</p> <p>Proximity Card
Standard RFID(125KHz), MIFARE(Optional)</p> <p>CPU Detail
A33 processor, quad core , Working Frequency 1.2GHz.</p> |
|--|---|---|

Installation



Cloud / Desktop Software Features

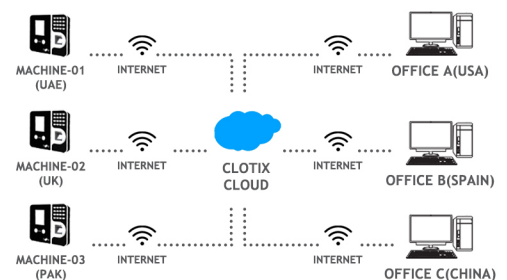
Complete Attendance System, Late, Overtime, Early, Leave Management, Multiple Shifts, HRM, Optional (Payroll Complete)
Reports : 18 Types (Customizable)

Cloud Connectivity
Only Internet Require via Wifi/Lan

Desktop Connectivity
Only Local Area Network Require



Support All Devices Even Smart LED Screens



You can view your Attendance of Multiple Branches from Multiple Locations any time from any device

